

GSM-R test system



TTS-S75a GPS

Test, approve, monitor and optimize GSM-R networks with comprehensive test systems

GSM-R technology for railways

TTS-S75a GPS

The TTS-S75a GPS is the right network for GSM-R in-depth air-interface testing and optimization. The PC application TrioTrace2 enables to control and view the measurement results live on PC.



Technical data

Dimensions	103 x 47 x 18.5 mm [LxWxH]
Weight	99 g
Battery	820 mAh Li-Ion
Operation time	300 hrs. standby 5 hrs. talk
Display	132x176 pixels TFT
Camera	1.3 Megapixel sensor
Data storage	24 MB internal, RS-MMC up to 1GB
Interfaces	Serial, IrDA, USB 2.0, Bluetooth, connector for external antenna by using a phone cradle, 2 virtual serial ComPorts via USB for concurrent trace information and control by AT commands or data transfer
Card reader	Mini-SIM
Audio	Integrated hands free
Temperature range	-10°C to +55°C

ASCII / EIRENE

VGCS, VBS, UUS1, eMLPP
FN, PFN, REC

ETCS L2 QoS

QoS / subset of values defined in the ERTMS/GSM-R QoS test specification [QoS Working Group, v1.2.i, 06-07-2006]
Transfer delay of user data frames
Round trip delay evaluation [optional loopback terminal required]
Data transmission interference and data throughput

System / Standards

Frequency bands	GSM-R/EGSM900/GSM1800/GSM1900
RF output power	Class 4 [2 W] for GSM-R/EGSM900 Class 1 [1 W] for GSM1800/GSM1900
Audio	Triple-rate codec for HR, FR and EFR AMR for non ASCII apps supported
GPS	External Bluetooth® GPS receiver during test monitor mode supported

Data services

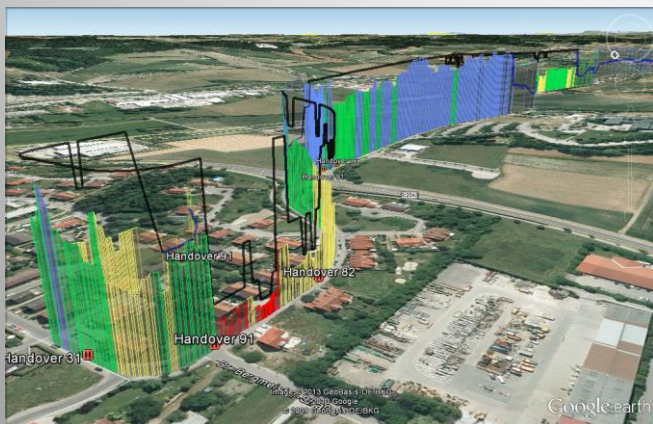
GPRS class 10 and EDGE class 10	
CSD and Fax group 3, class 2	
Messaging	MMS, EMS, SMS, CB, IM
Internet access	WAP 2.0
E-mail client	SMTP, POP3

Test system

Layer 1	Serving/neighbor cell BCCH, ARFCN, Cell ID RX LEVEL, timing Advance, power level
Radio Resources	ARFCN, channel type, speech codec, time slot, network and base station color code
Messaging	GSM Layer 2/3, GPRS RLC/MAC, GMM/SM RLC/MAC, LLC, GMM, SM/SNDP, TBF, RLC mode, CS, NCO
Mobility Management	Cell ID, LA, MCC/MNC, TMSI, ciphering
QoS	GSM FER, handover, call set up GPRS Data rates of LLC and RLC/MAC
Forcing	BCCH, cell reselection, handover, channel, band, power class, GPRS, time slot, TCH, ASCII Single ARFCN, set of frequencies, band, system information
Scanning	

TrioTrace2 PC application

TrioTrace2 SW to visualize the measured data customizable windows
Trace log recording; replay for post analyzing
Export of stored trace files in different formats



Part no.

TTS-S75a GPS 4095



Triorail Bahnfunk GmbH > Luitpoldstrasse 2a > 85276 Pfaffenhofen > Germany > www.triorail.com > info@triorail.com
The manufacturer reserves the right to change the product specification without notice.